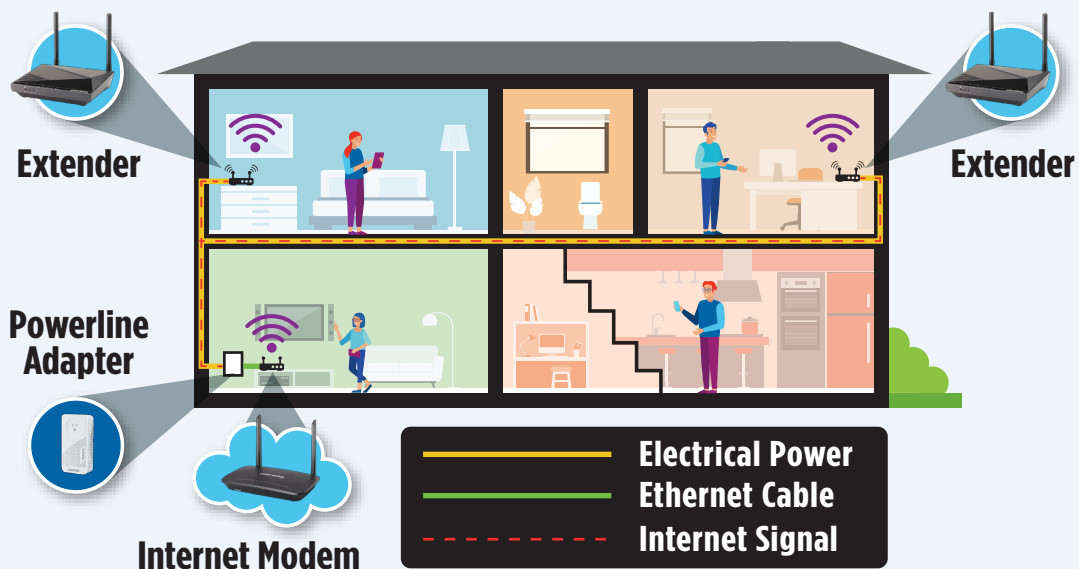




Boost your Connection with Bruce Telecom's Enhanced Wi-Fi Solution



No matter the size of your home, our Enhanced Wi-Fi solution provides seamless wall-to-wall connectivity for streaming, working, and staying connected to what matters most.

Improves Wi-Fi Performance

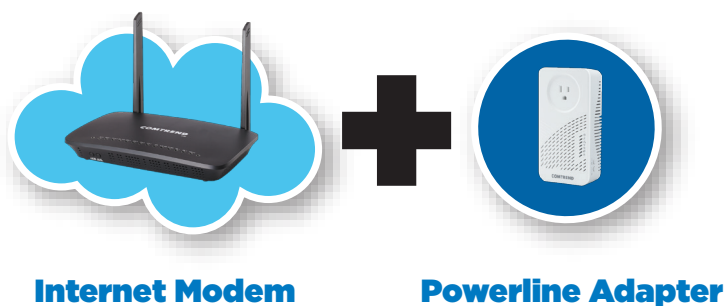
Our premium gateways provide dual-band Wi-Fi technology to improve your user experience. Your devices will connect at faster speeds and with more reliability.

Solves Wi-Fi Dead Zone Issues

Our advanced Powerline Mesh Points can be added to bring Wi-Fi to hard-to-reach locations like garages, basements, and far-away rooms.

Elevates Your Game

This solution is built to handle even higher bandwidths and lower latency to provide the best performance for gaming and streaming.



Powerline Extender (wireless extender)

The Powerline + Wi-Fi wireless expansion device ensures you have Wi-Fi coverage no matter where your modem is in your home. By pairing your modem with our Powerline Extender you can have maximum coverage wherever you are in your home.



Extender


Adaptive Roaming – Your Wi-Fi devices are continuously connected to the strongest signal for an enhanced Wi-Fi experience.


Auto Configuration – The network continuously extends changes to the Wi-Fi settings (SSID, Password, Channel, Security) for simplified setup & management.

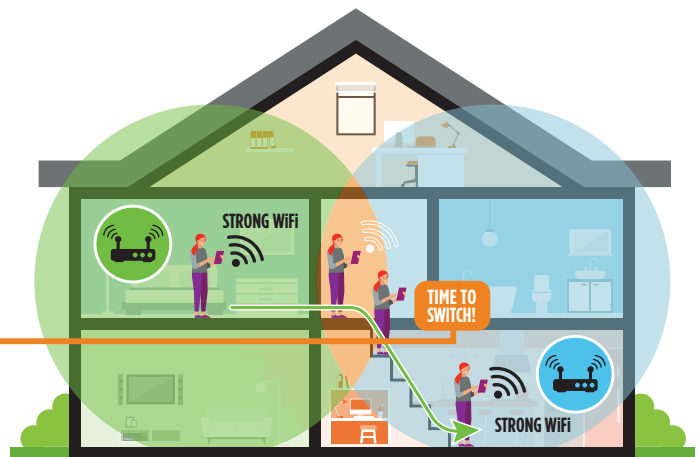
Unified Connectivity – The SSID/Password automatically becomes unified under one network per band.

Adaptive Roaming

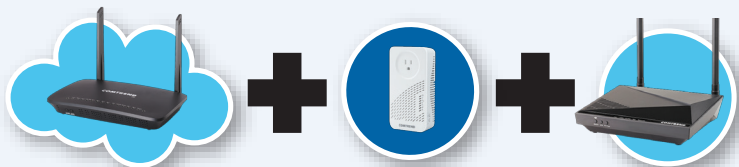
Knows when and where to connect you

 **Traditional WiFi**
Clings to weak WiFi signal

 **Adaptive Roaming**
Continuously connects to strongest WiFi signal **NEW!**



Want to enhance your Bruce Telecom Wi-Fi Solution?



Internet Modem

Powerline Adapter

Extender

Powerline Extender

\$4.00/mo

- per Wi-Fi Powerline Extender
- \$59.95 one-time set up fee

   bruce telecom.com
(519) 368-2000 | Toll-free: 1-866-517-2000

Bruce Telecom
Connecting our Community 

Actual Wi-Fi performances are dependent upon network and device conditions. The 5 GHz Wi-Fi frequency will only work on 5 GHz enabled devices. Many environmental factors beyond Bruce Telecom's control may adversely affect Wi-Fi performance. To receive a modem as a new customer, customers must subscribe to any Bruce Telecom Internet plan. All equipment must be returned upon cancellation or it will be billed out after cancellation. All equipment must be returned in like-new condition with power cord. Hardware provided by Bruce Telecom may be new or refurbished.